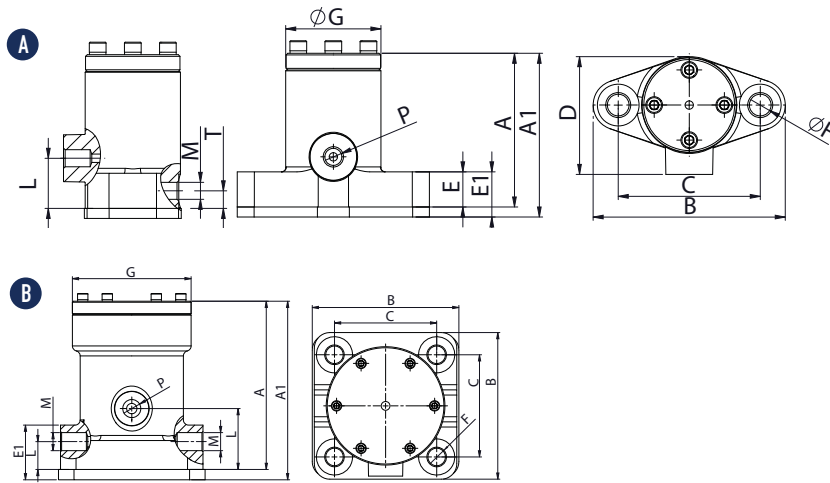




P - Linear pneumatic vibrators - Continuous impact



| DIMENSIONAL SPECIFICATIONS | | | | | | | | | | | | | | | | | | | | | | | | | | | | | | | |
|----------------------------|-------|-----|------|-----|------|---------|---------|-------|---------|-----|------|----|------|----|------|----|------|-----|------|----|------|---------|------|------|----------|----|------|-----|------|--------|--|
| MODEL | DRAW. | A | | A1 | | B | | C | | D | | E | | E1 | | F | | G | | H | | P | | L | | M | | N | | WEIGHT | |
| | | mm | in | mm | in | mm | in | mm | in | mm | in | mm | in | mm | in | mm | in | mm | in | mm | in | IN BSPP | mm | in | OUT BSPP | mm | in | kg | lb | | |
| P25 | A | 92 | 3.62 | 98 | 3.90 | 115 | 4.52 | 85 | 3.34 | 70 | 2.75 | 21 | 0.80 | 27 | 1.06 | 13 | 0.51 | 58 | 2.28 | 30 | 1.18 | 1/4" | 10.5 | 0.41 | 1/4" | 25 | 0.98 | 2.2 | 4.9 | | |
| P40 | A | 121 | 4.76 | 127 | 5.00 | 148 | 5.8 | 110 | 4.33 | 91 | 3.58 | 25 | 1.00 | 31 | 1.22 | 17 | 0.67 | 75 | 2.95 | 45 | 1.77 | 3/8" | 16 | 0.63 | 3/8" | 35 | 1.37 | 4.5 | 9.9 | | |
| P60 | B | 163 | 6.41 | 173 | 6.4 | 138x142 | 5.4x5.5 | 99x99 | 3.9x3.9 | 125 | 4.92 | 28 | 1.1 | 38 | 1.50 | 17 | 0.67 | 115 | 4.52 | 60 | 2.36 | 1/2" | 27 | 1.06 | 2x1/2" | 60 | 2.36 | 11 | 24.3 | | |

| MODEL | 4 bar (58 psi) | | | | | | | | | | | | | | | | 6 bar (87 psi) | | | | | | | | | | |
|-------|----------------|------|-------|------|----------------|-------|--------------|-------|-----------|-----|-------|------|----------------|-----|--------------|------|----------------|------|-------|-------|----------------|-------|--------------|----|------|------|-------|
| | VIBRATION | | FORCE | | WORKING MOMENT | | AIR CONSUMP. | | VIBRATION | | FORCE | | WORKING MOMENT | | AIR CONSUMP. | | VIBRATION | | FORCE | | WORKING MOMENT | | AIR CONSUMP. | | | | |
| | V/min | N | lb | kgcm | inlb | l/min | Cfm | V/min | N | lb | kgcm | inlb | l/min | Cfm | V/min | N | lb | kgcm | inlb | l/min | Cfm | V/min | N | lb | kgcm | inlb | l/min |
| P25 | 2500 | 294 | 66 | 0.43 | 0.37 | 55 | 1.9 | 3800 | 680 | 153 | 0.43 | 0.37 | 80 | 2.8 | 4500 | 954 | 214 | 0.43 | 0.37 | 200 | 7.1 | | | | | | |
| P40 | 1650 | 484 | 109 | 1.63 | 1.41 | 31 | 1.1 | 2200 | 860 | 193 | 1.63 | 1.41 | 120 | 4.2 | 2800 | 1396 | 314 | 1.63 | 1.41 | 250 | 8.8 | | | | | | |
| P60 | 1200 | 1296 | 291 | 4.11 | 3.57 | 100 | 3.5 | 1600 | 2304 | 518 | 4.11 | 3.57 | 250 | 8.8 | 1900 | 3250 | 731 | 4.11 | 3.57 | 400 | 14.1 | | | | | | |

P - LINEAR PNEUMATIC VIBRATORS - CONTINUOUS IMPACT

| | |
|-----------------|--|
| APPLICATION | Hopper silo - salt spreader - dump trailer - rail cart |
| POWDER | Hygroscopic - humid - sticky |
| PROBLEM SOLVING | Bridge and rat-holing |

FEATURES

| | |
|---------------------|--|
| DUTY CYCLE | Continuous |
| WORKING PRESSURE | From 2 bar to 6 bar (from 29 psi to 87 psi) |
| PNEUMATIC CIRCUIT | Filter + flow control valve + lubrication + 3/2 ways valve |
| AIR SUPPLY QUALITY | Class 5.4.4. |
| WORKING TEMPERATURE | From -20 °C to 200 °C (from -4 °F to 392 °F) |
| MAX NOISE LEVEL | 100 dB(a) |
| TECHNOLOGY | Piston pneumatic impact |
| MATERIAL | Grey cast iron body (powder painted) - aluminium cover |

OPTIONS

| | |
|--------------|----------------------------|
| KIT ATEX | II 2D CT(X) II 2G CT(X) |
| SAFETY CHAIN | Available |

This information is furnished without warranty, representation, inducement or license of any kind. It is accurate to the best OLI knowledge or is obtained from sources believed to be accurate. OLI therefore assumes no legal responsibility.



COMPATIBLE WITH MOST COMMON US FOOT PRINT



P1 R



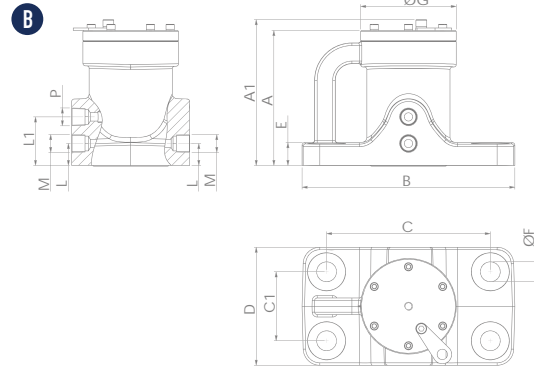
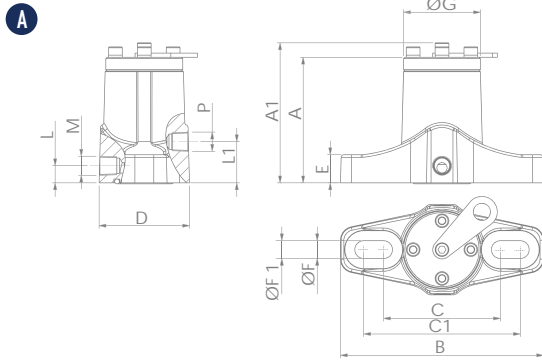
P2 R



P3 R



P3 S



DIMENSIONAL SPECIFICATIONS

| MODEL | DRAW. | A | | A1 | | B | | C | | C1 | | D | | E | | ØF | | ØF1 | | ØG | | P | L | | L1 | | M | | WEIGHT | |
|-------|-------|-------|------|-------|------|-----|------|-----|------|-----|------|-----|------|------|------|----|------|-----|------|-----|------|--------|------|------|------|------|------|------|---------|----|
| | | mm | in | mm | in | mm | in | mm | in | mm | in | mm | in | mm | in | mm | in | mm | in | mm | in | IN NPT | mm | in | mm | in | mm | in | OUT NPT | kg |
| P10 R | A | 91.5 | 3.57 | 102.0 | 3.98 | 148 | 5.77 | 85 | 3.32 | 114 | 4.45 | 66 | 2.57 | 21.0 | 0.80 | 13 | 0.51 | / | / | 56 | 2.18 | 1/4" | 30.0 | 1.17 | 12.5 | 0.49 | 1/4" | 2.2 | 4.9 | |
| P20 R | A | 120.5 | 4.70 | 133.5 | 5.21 | 234 | 9.13 | 110 | 4.29 | 191 | 7.45 | 96 | 3.74 | 24.5 | 0.96 | 19 | 0.74 | 17 | 0.66 | 75 | 2.93 | 3/8" | 44.5 | 1.74 | 19.0 | 0.72 | 3/8" | 5.5 | 12.1 | |
| P30 R | A | 162.5 | 6.34 | 175.5 | 6.84 | 235 | 9.17 | 153 | 5.97 | 190 | 7.41 | 130 | 5.07 | 27.5 | 1.07 | 16 | 0.62 | / | / | 115 | 4.49 | 1/2" | 58.5 | 2.28 | 26.5 | 1.03 | 1/2" | 11.0 | 24.3 | |
| P30 S | B | 162.5 | 6.34 | 175.5 | 6.84 | 256 | 9.98 | 197 | 7.68 | 83 | 3.24 | 142 | 5.54 | 27.5 | 1.07 | 24 | 0.94 | / | / | 115 | 4.49 | 1/2" | 58.5 | 2.28 | 26.5 | 1.03 | 1/2" | 14.0 | 30.9 | |

| MODEL | 2 bar (29 psi) | | | | | | | | 4 bar (58 psi) | | | | | | | | 6 bar (87 psi) | | | | | | | |
|-------|----------------|------|-------|------|----------------|-------|--------------|-------|----------------|-----|-------|------|----------------|-----|--------------|------|----------------|------|-------|-------|----------------|--|--------------|--|
| | VIBRATION | | FORCE | | WORKING MOMENT | | AIR CONSUMP. | | VIBRATION | | FORCE | | WORKING MOMENT | | AIR CONSUMP. | | VIBRATION | | FORCE | | WORKING MOMENT | | AIR CONSUMP. | |
| | V/min | N | lb | kgcm | inlb | l/min | Cfm | V/min | N | lb | kgcm | inlb | l/min | Cfm | V/min | N | lb | kgcm | inlb | l/min | Cfm | | | |
| P10 R | 2500 | 294 | 66 | 0.43 | 0.37 | 55 | 1.9 | 3800 | 680 | 153 | 0.43 | 0.37 | 80 | 2.8 | 4500 | 954 | 214 | 0.43 | 0.37 | 200 | 7.1 | | | |
| P20 R | 1650 | 484 | 109 | 1.63 | 1.41 | 70 | 1.1 | 2200 | 860 | 193 | 1.63 | 1.41 | 120 | 4.2 | 2800 | 1396 | 314 | 1.63 | 1.41 | 250 | 8.8 | | | |
| P30 R | 1200 | 1296 | 291 | 4.11 | 3.57 | 100 | 3.5 | 1600 | 2304 | 518 | 4.11 | 3.57 | 250 | 8.8 | 1900 | 3250 | 731 | 4.11 | 3.57 | 400 | 14.1 | | | |
| P30 S | 1200 | 1296 | 291 | 4.11 | 3.57 | 100 | 3.5 | 1600 | 2304 | 518 | 4.11 | 3.57 | 250 | 8.8 | 1900 | 3250 | 731 | 4.11 | 3.57 | 400 | 14.1 | | | |

P-US - LINEAR PNEUMATIC VIBRATORS - CONTINUOUS IMPACT

| | |
|-----------------|--|
| APPLICATION | Hopper silo - salt spreader - dump trailer - rail cart |
| POWDER | Hygroscopic - humid - sticky |
| PROBLEM SOLVING | Bridge and rat-holing |

FEATURES

| | |
|---------------------|--|
| DUTY CYCLE | Continuous |
| WORKING PRESSURE | From 2 bar to 6 bar (from 29 psi to 87 psi) |
| PNEUMATIC CIRCUIT | Filter + flow control valve + lubrication + 3/2 ways valve |
| AIR SUPPLY QUALITY | Class 5.4.4. |
| WORKING TEMPERATURE | From -20 °C to 200 °C (from -4 °F to 392 °F) |
| MAX NOISE LEVEL | 100 dB(a) |
| TECHNOLOGY | Piston pneumatic impact |
| MATERIAL | Grey cast iron body (powder painted) - aluminium cover |

OPTIONS

| | |
|--------------|----------------------------|
| KIT ATEX | II 2D CT(X) II 2G CT(X) |
| SAFETY CHAIN | Available |

This information is furnished without warranty, representation, inducement or license of any kind. It is accurate to the best OLI knowledge or is obtained from sources believed to be accurate. OLI therefore assumes no legal responsibility.